

TECHNICAL FILE

PRODUCT RANGE: KING

CODE: KING-BSS1B-00

DESCRIPTION: SHOWER SEAT W/BACKREST BLACK LM

PRODUCT FEATURES:

The Shower Seat with Backrest Black is designed for those who want to increase their comfort while showering and carrying out different hygiene operations in the bathroom. The ergonomically designed surface area of the seat reduces pressure, increasing user comfort. The anti-slip pattern of the seat surface prevents sliding during the hygiene operation to ensure maximum safety. The 4 legs are adjustable in height to better fit with the user needs. The seat is made of polypropylene offering durability, strength and warmth. The frame is made of anodized aluminium to ensure the best resistance against corrosion. All the surfaces are easy to clean.

MECHANICAL PERFORMANCE:

Max user weight 150 kg; 330 lb.

CERTIFICATIONS:

MDR 745 „European Regulation 1017/845”.

APPLICABLE NORMS:

EN ISO 14971:2019+A11:2021, PN-EN 1041 : 2010 + A1 2013, EN ISO 12182:2012, EN ISO 21856:2022, EN ISO 14001:2015, EN ISO 13485:2016+A11:2021, EN ISO 17966:2016.

MAINTENANCE:

Periodically check that fixing fittings conform to initial mounting.
Clean with water and non-aggressive detergent.
Do not use abrasive or corrosive products.

PRODUCT PACKAGING:

Box dimensions: 573x413x154 mm.
Gross Weight: 2.99 kg.
Net Weight: 2.41 kg.
Shipping carton dimensions: 796x596x420 mm.

PACKAGING COMPONENTS

Q.TY

CODE

Box	1	RB-KINGSC1BA-00
Shipping Carton	1/5	MB5-KINGSC1BA-00
User Manual	1	UM-KINGSS1B-00
Box Label	1	BL-BKINGSS1B-00
Shipping Carton Label	1/5	SL-BKINGSS1B-00
Product Label	1	PL-ASKINGSS1B-00

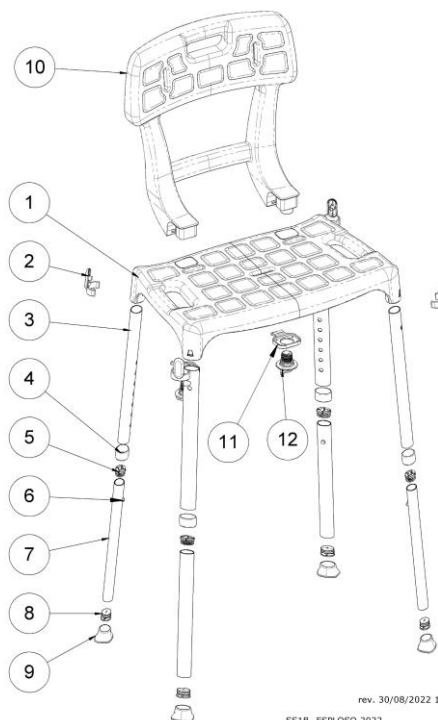
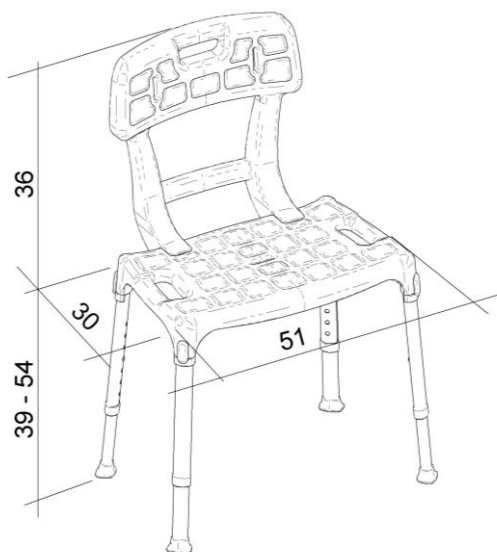
PRODUCT COMPONENTS

Q.TY

MATERIAL

REF.

Seat	1	Polypropylene 30% CC	1
Plugs for legs	4	PA6	2
External Tube	4	Anodized Aluminium	3
Ring connector	4	Polyethylene	4
Central Caps	4	Polypropylene	5
Spring	4	Stainless Steel	6
Internal Tube	4	Anodized Aluminium	7
Terminal Caps	4	Polypropylene	8
Rubber Caps	4	TPR	9
Backrest	1	Polypropylene 30% CC	10
Clamp Backrest	2	Polypropylene 30% CC	11
Lower Screw	2	Polypropylene 30% CC	12



rev. 30/08/2022 19:05:45
SS1B - ESPOLO 2022

Ref. Technical File KING-BSS1B-00 Rev02 as of 01/2024

The above data cannot be binding. LM Global Design Ltd. reserves itself the right to make technical or aesthetic modifications without notice at any time.